



# SCP Tribune<sup>®</sup>

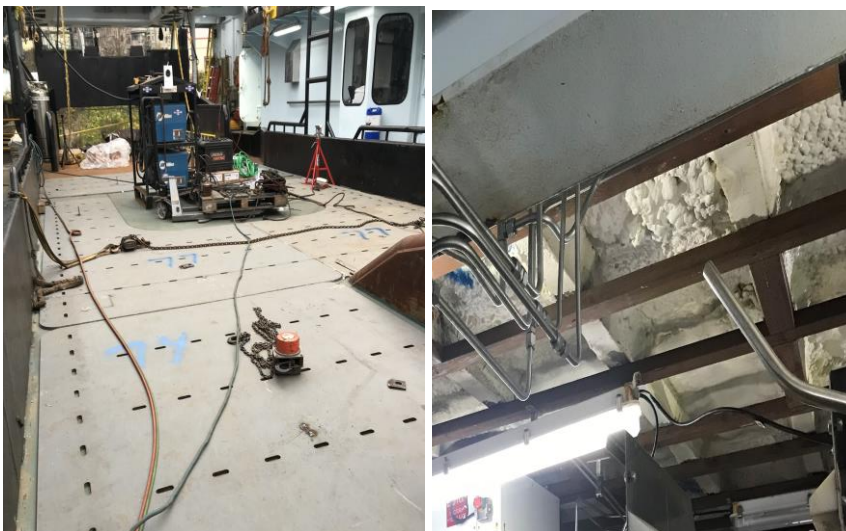
## Smoke Watch

In 2004 OSHA gave us **Subpart P** to cut down on destructive ship repair fires. Subpart P has 3 main parts; The **Fire Safety Plan**, the **Fire Watch Training Plan**, and the **Measures to Prevent Fires**.

The basic strategy in preventing fires is this: Suppose burnable things - electrical wiring, cargo residues, rags, insulating foam...(the list goes on forever...) - might be hit by sparks, slag, or heat. If so, we must either get them out of the workplace, or we must isolate them.

So, this month welding a 3/4" plate to a trawl deck with isocyanate foam sprayed beneath was real-life Subpart P.

The Competent Person immediately saw the danger: White-hot production welding could ignite the foam! But, removing the foam wasn't an option. What to do? (cont.)



**Note: The trawl deck doubler required heavy-duty perimeter-and-plug-welding. But within the foam below were electronics and hydraulics. That foam could not be disturbed. It had to be left in place.**

## TRAINING

### Shipyards Competent Person

#### Full 3-Day Courses

Dec 5-7 @ SSC\*

Jan 9-11 @ SSC\*

Jan 22-24 @ Anchorage

Feb 6-8 @ SSC\*

\*South Seattle College  
Georgetown Campus



#### 1-Day Update Courses

Dec 6 @ SSC\*

Dec 13 @ Fishermen's  
Terminal

Jan 10 @ SSC\*

Jan 17 @ Fishermen's  
Terminal

Jan 23 or 24 @ Anchorage  
Feb 7 @ SSC\*

Feb 14 @ Fishermen's  
Terminal



### DIRECTIONS:

#### Fishermen's Terminal:

Nordby Conference Room

#### SSC:

Georgetown Campus very close to  
I-5, Michigan St Exit, straight to  
Corson Ave S

### OSHA 10 Maritime:

10-hour training on 29 CFR 1915 provides methods on recognition, avoidance, abatement, and prevention of safety and health hazards in workplaces specific to the maritime industry.

Any Questions? Call 206-932-0206

## Smoke Watch, Cont.

First, the word went out to everyone: NO HOT WORK until we get organized!

Second, Freddie the Project Safety Manager got everyone on the same page:

- Get the Seattle Fire Department hot work permit!
- Let's get expert advice; Call the Chemists!
- Let's get some SCP's trained so they can supervise the fire protection!
- Let's get those firewatches trained!
- Let's get them equipped: water lines, valves, and nozzles at the ready!
- We've got to see what's going on; take down some ceiling panels!
- Communication is super-important: Lay out the hot work by frame numbers and, by the way. Who's got the radios?

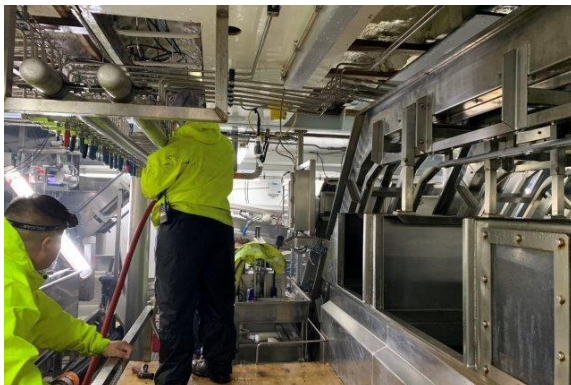


**Radio contact with the firewatches below..**



**Jeremie ready to down the first wisp of smoke...**

- Let's get everyone on the same page: Final meeting for contractors, workers, crew.
- Let's go to work!



**Some foam was tough to monitor**

# Smoke Watch, Cont.



Costly and stressful as the job was, avoiding a destructive foam fire remained the absolute bottom line.

After a couple days' supervisory stress, the main deck welding was done and the ceiling paneling replaced.



No Forklift Handy

Special thanks to all who called us to transport donated stores to the local food banks. Thank you especially Rory (F/V Excellence,) F/V Arctic Storm, and Ryan (American Cruises.)

Remember, Generous Companies: We have access to freezers and coolers! Not a fishstick should go in the dumpster! And though some stores may seem a bit institutional (like 14 gallons of maraschino cherries...) nothing goes to waste!



Down on the Springs

Congratulations to **Rocky Alford** (of **JAG**) winner of November's quiz.

Honorable Mention: Will Yates, Eric Martin, Rob Hodge, Mike Farley, Marion Bolte

**Q:** A craftsman (a welder, for instance) wearing a helmet may not work from a ladder. Except in one case. What's that?

**A:** When doing the initial or final hot work for the scaffolding or other similar supports.

**December's Question: Complete firewatch instruction rhyme, using OSHA language:**

He saw the smoke and onto the ship he went.  
"Hey! Call **911**, if it's not \_\_\_\_\_!"

Please send us your answer to [newsletter@soundtestinginc.com](mailto:newsletter@soundtestinginc.com)  
or [admin@soundtestinginc.com](mailto:admin@soundtestinginc.com)

before December 25, 2018. Every correct answer will be entered in a random drawing and one will win a **\$50** gift card! (One entry per person, please.)